



MONDAY * DECEMBER 13th, 2021

7:00 P.M. Sharp!

AUCTION LOCATION: THE CENTRE BANQUET FACILITY

@ 601 N. Main St. Bluffton, OH ~ "Watch For Auction Signs"

112.73 +/- ACRES QUALITY PRODUCTIVE FARMLAND

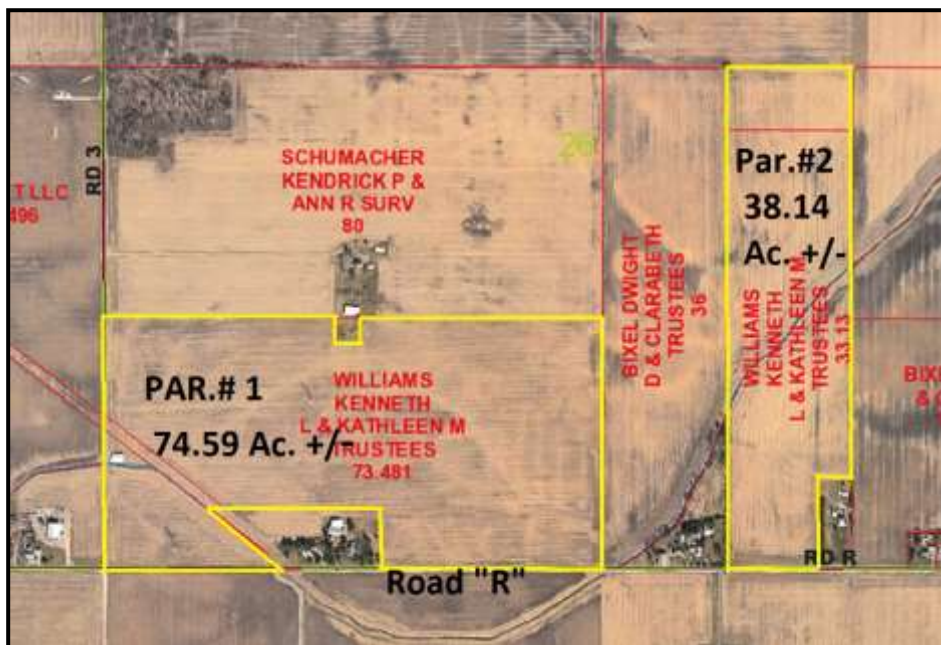
SECTION 26 * RILEY TWP * PUTNAM COUNTY, OH

2 PARCELS PLUS the COMBINATION

Frontage on Rd "R" & Rd "3" East of Pandora ~ Pandora School District

Farms located app. 2 miles East of Pandora on Rd. "R" in Putnam County

PARCEL #1: 74.59 +/- Acres
Farmland in the S 1/2 of SW 1/4 in Section 26 of Riley Twp., Putnam County, OH w/ Frontage on Rd. "R" and on Rd. "3", Mostly Blount, Pewamo, Haney, Millgrove, Houcktown, and Belmore, Soils, Included is a 40x64 Pole Barn, There are 2 Power Towers on this Farm, Includes Old R.R. Right Away, Real Estate Taxes \$1,672.98 Per 1/2 Year / S.A. \$287.96



PARCEL #2: 38.14 +/- Acres
Farmland in the E 1/2 of W 1/2 of the SE 1/4 in Section 26 of Riley Twp., Putnam County, OH w/ Frontage on Rd. "R", Mostly Millgrove, Blount, Pewamo, and Haskins Soils, Real Estate Taxes \$421.46 Per 1/2 Year / SA 137.90

PARCEL #3: 112.73 +/- Acres Combination of Parcels 1 & 2 As A Single Unit

"COLLECTIVE BIDDING METHOD USED"

For TERMS, MAPS, or OTHER INFO Contact: Aaron Siefker 419-235-0789

Owner: KENNETH DILLER TESTAMENTARY TRUST

Kenneth & Kathleen Williams, Co-Trustees

Phil Rooney, Attorney for Sellers

Conducted By:

SIEFKER REAL ESTATE & AUCTION CO. LTD * OTTAWA, OH

AARON SIEFKER, Broker & Auctioneer

419-538-6184 Office or 419-235-0789 Cell

TOM & ERIC ROBBINS, DAN & COLE LIMBER; Assisting Auctioneers

Licensed by the Dept of Ag * View online @ www.siefkerauctions.com