

www.blufftonicon.com

Bluffton  **ICON**

It's where Bluffton gets its news!



**Bluffton
schools**

2016-17 Bluffton school report card

2016 - 2017 Report Card for Bluffton Exempted Village School District

 [View Printable PDF](#)

[Overview](#)

[Achievement](#)

[Progress](#)

[Gap Closing](#)

[Graduation Rate](#)

[K-3 Literacy](#)

[Prepared for Success](#)



Superintendent: Gregory J. Denecker
Address: 102 S Jackson St
Bluffton OH 45817-1218

Phone: (419) 358-5901
County: Allen

[BACK TO OVERVIEW](#)

Your District's Schools

School	Achievement	Progress	Gap Closing	Graduation Rate	K-3 Literacy	Prepared for Success
Bluffton Elementary School	A	B	A	NR	B	NR
Bluffton High School	C	C	A	A	NR	C
Bluffton Middle School	C	B	B	NR	NR	NR

2016 - 2017 Report Card for Bluffton Exempted Village School District

[View Printable PDF](#)

- Overview
- Achievement
- Progress
- Gap Closing
- Graduation Rate
- K-3 Literacy
- Prepared for Success

DISTRICT GRADE

Coming in **2018**

DISTRICT DETAILS

VIEW SCHOOLS

Financial Data

These measures answer several questions about spending and performance. How much is spent, the source of the revenue and how do these measures compare across districts?

VIEW DATA

Achievement

The Achievement component represents the number of students who passed the state tests and how well they performed on them.

COMPONENT GRADE

B

VIEW MORE DATA

VIEW GIFTED DATA

Performance Index
85.8%..... **B**

Indicators Met
75.0%..... **C**

Progress

The Progress component looks closely at the growth that all students are making based on their past performances.

COMPONENT GRADE

B

VIEW MORE DATA

Value-Added

Overall..... **A**

Gifted..... **A**

Lowest 20% in Achievement..... **C**

Students with Disabilities..... **C**

Gap Closing

The Gap Closing component shows how well schools are meeting the performance expectations for our most vulnerable populations of students in English language arts, math and graduation.

COMPONENT GRADE

B

VIEW MORE DATA

Annual Measurable Objectives
81.5%..... **B**

Graduation Rate

The Graduation Rate component looks at the percent of students who are successfully finishing high school with a diploma in four or five years.

COMPONENT GRADE

A

VIEW MORE DATA

Graduation Rates

96.3% of students graduated in 4 years..... **A**

98.8% of students graduated in 5 years..... **A**

K-3 Literacy

The K-3 Literacy component looks at how successful the school is at getting struggling readers on track to proficiency in third grade and beyond.

COMPONENT GRADE

B

VIEW MORE DATA

K-3 Literacy Improvement
58.9%..... **B**

Prepared for Success

Whether training in a technical field or preparing for work or college, the Prepared for Success component looks at how well prepared Ohio's students are for all future opportunities.

COMPONENT GRADE

C

VIEW DATA

2016 - 2017 Report Card for Bluffton Exempted Village School District

[View Printable PDF](#)

- Overview
- Achievement
- Progress
- Gap Closing
- Graduation Rate
- K-3 Literacy
- Prepared for Success

Achievement

The Achievement component represents the number of students who passed the state tests and how well they performed on them.

COMPONENT GRADE

B

GRADE

B

Performance Index

The Performance Index measures the test results of every student, not just those who score proficient or higher. There are six levels on the index and districts receive points for every student in each of these levels. The higher the achievement level, the more the points awarded in the district's index. This rewards schools and districts for improving the performance of all students, regardless of achievement level.

Performance Index

85.8%

102.9 of a possible 120.0

Calculation

Achievement Level	Pct of Students	Points for this Level	Points Received
Advanced Plus	0.8	x 1.3	= 1.1
Advanced	35.2	x 1.2	= 42.3
Accelerated	27.5	x 1.1	= 30.2
Proficient	22.5	x 1.0	= 22.5
Basic	9.0	x 0.6	= 5.4
Limited	5.0	x 0.3	= 1.5
Untested	0.0	x 0.0	= 0.0
			102.9

A = 90.0 - 100.0%
B = 80.0 - 89.9%
C = 70.0 - 79.9%
D = 50.0 - 69.9%
F = 0.0 - 49.9%

GRADE

C

Indicators Met

Indicators Met measures the percent of students who have passed state tests. It also includes the gifted indicator. Test results are reported for each student in a grade and subject. The passage rate for each indicator is 80%.

Indicators Met %

75.0%

18 out of 24

Indicators

Grade	Subject	Passage Rate	Status
3rd Grade	English Language Arts	94.3%	✓
	Mathematics	94.3%	✓
4th Grade	English Language Arts	80.8%	✓
	Mathematics	93.3%	✓
	Social Studies	98.1%	✓
5th Grade	English Language Arts	93.7%	✓
	Mathematics	94.9%	✓
	Science	98.7%	✓
6th Grade	English Language Arts	77.7%	✗
	Mathematics	86.2%	✓
	Social Studies	83.0%	✓

GIFTED INDICATOR ✗

2016 - 2017 Report Card for Bluffton Exempted Village School District

[View Printable PDF](#)

- Overview
- Achievement
- Progress
- Gap Closing
- Graduation Rate
- K-3 Literacy
- Prepared for Success



Superintendent: Gregory J. Denecker
Address: 102 S Jackson St
 Bluffton, OH 45817-1218

Phone: (419) 358-5901
County: Allen

[BACK TO OVERVIEW](#)

Career Technical Planning District: [Apollo JVSD CTPD](#)

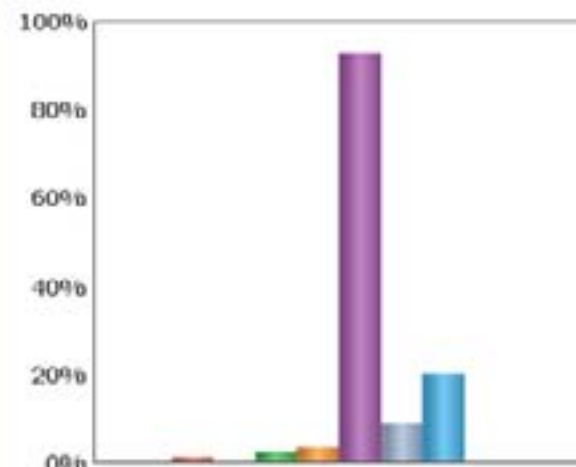
Directory information current as of the 2016-2017 Report Card publication date.

Click here to go to the district's profile page. *By clicking this link you will leave the Ohio Department of Education's website, and the Department is not responsible for any external site's content.*

Your District's Students

Enrollment

- Percentages
- Data Table
- Trend

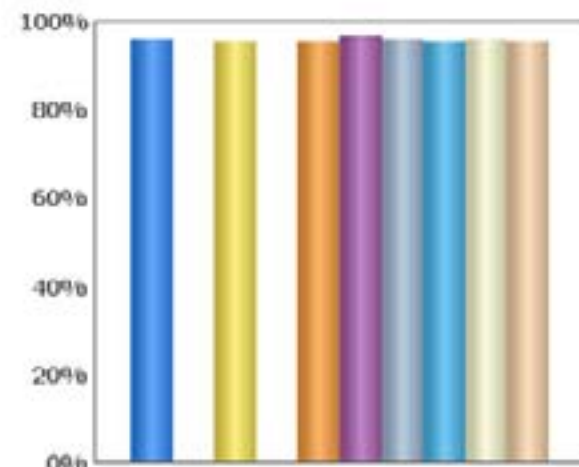


- American Indian...
- Black, Non-Hisp...
- Hispanic
- Multiracial
- Students with D...
- White, Non-Hisp...
- Economic Disadv...
- Limited English...
- Migrant

Enrollments of less than 10 students are not shown.

Attendance

- Attend Rates
- Data Table
- Trend

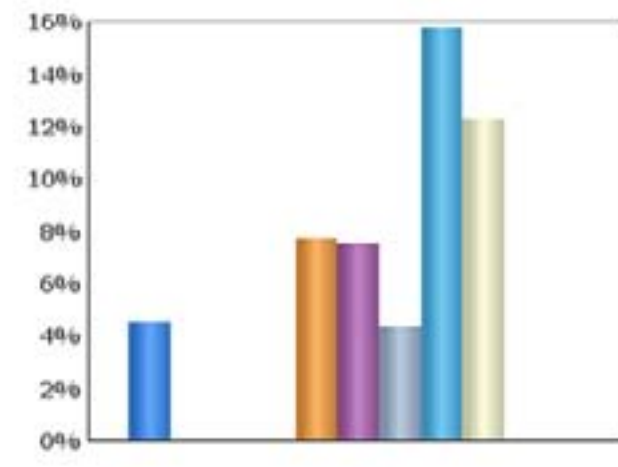


- All Students
- Asian or Pacifi...
- Black, Non-Hisp...
- Hispanic
- White, Non-Hisp...
- Female
- American Indian...
- Black, Non-Hisp...
- Multiracial
- Students with D...

Attendance Rate is not shown if enrollment is less than 10.

Mobility

- District Mobility
- Data Table
- Trend



- All Students
- Asian or Pacifi...
- Black, Non-Hisp...
- White, Non-Hisp...
- Economic Disadv...
- Limited English...
- Migrant
- American Indian...
- Black, Non-Hisp...
- Multiracial
- Students with Di...

This chart shows the percentage of students who, because they moved into or out of the district, did not spend a majority of the school year within the district.

Chronic Absenteeism Rate: 5.8%

Number of Limited English Proficiency Students Excluded from Accountability Calculations: --

State and federal law require an annual assessment of Limited English Proficient (LEP) students to measure their English language proficiency. The Ohio English Language Proficiency Assessment (OELPA) is the assessment used in Ohio to gauge LEP students' growth in learning English.

2016 - 2017 Report Card for Bluffton Exempted Village School District

[View Printable PDF](#)

- Overview
- Achievement
- Progress
- Gap Closing
- Graduation Rate
- K-3 Literacy
- Prepared for Success

Graduation Rate



The Graduation Rate component looks at the percent of students who are successfully finishing high school with a diploma in four or five years.

COMPONENT GRADE

A

4-Year Graduation Rate

The 4-year graduation rate applies to the Class of 2016 who graduated within four years, i.e. students who entered the 9th grade in 2013 and graduated by 2016.

GRADE
A

96.3%

A = 93.0 - 100.0%
 B = 89.0 - 92.9%
 C = 84.0 - 88.9%
 D = 79.0 - 83.9%
 F = 0.0 - 78.9%



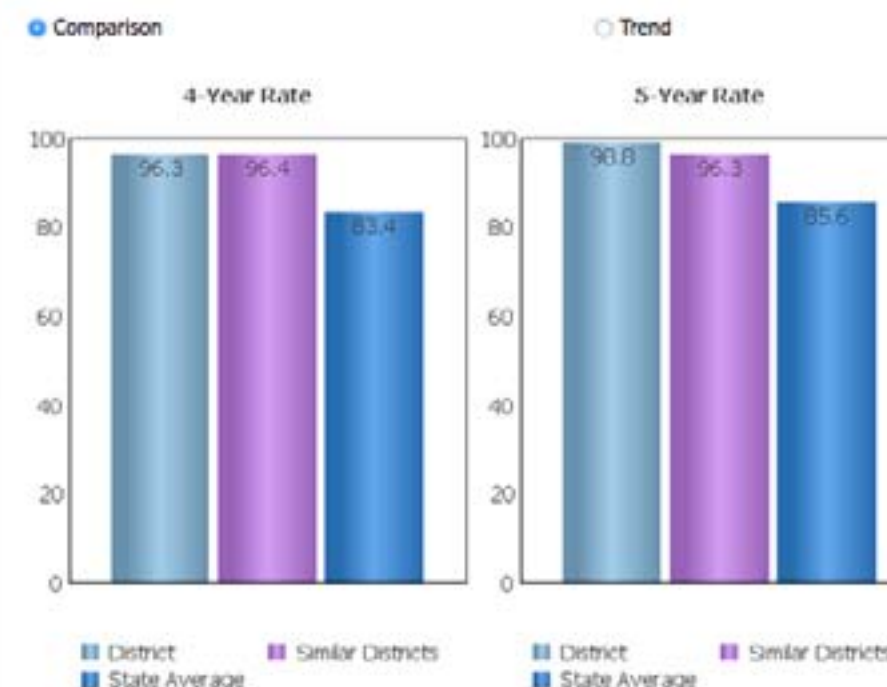
5-Year Graduation Rate

The 5-year graduation rate applies to the Class of 2015 who graduated within five years, i.e. students who entered the 9th grade in 2012 and graduated by 2016.

GRADE
A

98.8%

A = 95.0 - 100.0%
 B = 90.0 - 94.9%
 C = 85.0 - 89.9%
 D = 80.0 - 84.9%
 F = 0.0 - 79.9%



Progress



The Progress component looks closely at the growth that all students are making based on their past performances.

For more detailed data on Progress and Value-Added, [click here](#).

COMPONENT GRADE

B

GRADE

A

Overall

This measures the progress for all students in math, ELA, science and social studies using tests in grades 4-8 and some end-of-course exams.

GRADE

A

Gifted Students

This measures the progress for students identified as gifted in reading, math, science, social studies and/or superior cognitive ability.

GRADE

C

Students in the Lowest 20% in Achievement

This measures the progress for students identified as the lowest 20% statewide in reading, math, science or social studies achievement.

GRADE

C

Students with Disabilities

This measures the progress for students with disabilities.

Progress Details

Value-Added Data Progress vs. Performance Index

These tables show the Progress scores by test grade and subject for students in grades 4-8 and some end-of-course tests, and includes up to three years of data as available.

Test Grade	Progress Score				
	English Language Arts	Mathematics	Social Studies	Science	All Tests
All Grades	Orange	Green	Orange	Green	Green
4th Grade	Orange	Green			Green
5th Grade	Orange	Orange		Green	Green
6th Grade	Green	Red	Orange		Red
7th Grade	Orange	Orange			Green
8th Grade	Orange	Green		Green	Green

Test Grade		Progress Score	Test Grade		Progress Score
High School	English I	Orange	High School	Algebra I	Orange
	English II	Red		Geometry	Orange

What do the colors mean?

The Progress Component measures how groups of students made progress as compared to the statewide expectation of growth. The expectation of growth is based on how students in the group performed, on average, compared to other students like them across the state

- Students made more progress than expected – significant evidence
- Students made more progress than expected – moderate evidence
- Students made progress similar to the statewide expectation – evidence
- Students made less progress than expected – moderate evidence
- Students made less progress than expected – significant evidence

2016 - 2017 Report Card for Bluffton Exempted Village School District

[View Printable PDF](#)

[Overview](#)

[Achievement](#)

[Progress](#)

[Gap Closing](#)

[Graduation Rate](#)

[K-3 Literacy](#)

[Prepared for Success](#)

K-3 Literacy



The K-3 Literacy component looks at how successful the school is at getting struggling readers on track to proficiency in third grade and beyond.

COMPONENT GRADE

B

In your district... Details of Measure

GRADE

B

K-3 Literacy Improvement



58.9%

A = 74.7 - 100.0%
B = 49.3 - 74.6%
C = 23.9 - 49.2%
D = -1.5 - 23.8%
F = < -1.6%

44 Students Moved to On Track - 1 RIMP Deductions ÷ 73 Students Started Off Track

= 58.9%

RIMP = Reading Improvement and Monitoring Plan. Districts are required to create a RIMP for students not on track to be proficient in English Language Arts by the end of 3rd grade.



- Remained Off Track - Moved to On Track

3rd Grade Reading Guarantee On-Track by Grade Level

Ohio's Third Grade Reading Guarantee ensures that students are successful in reading before moving on to fourth grade. Schools must provide supports for struggling readers in early grades. If a child appears to be falling behind in reading, the school will immediately start a Reading Improvement and Monitoring Plan. The program ensures that every struggling reader gets the support he or she needs to learn and achieve.

Students have multiple opportunities to meet promotion requirements including meeting a minimum promotion score on the reading portion of the state's third grade English language arts test given twice during the school year. Students have an additional opportunity to take the state assessment in the summer, as well as a district-determined alternative assessment.

How many third graders met the Third Grade Reading Guarantee requirements for promotion to 4th grade? **100.0%**

How many third graders scored proficient on the state Reading test? **94.3%**

2016 - 2017 Report Card for Bluffton Exempted Village School District

[View Printable PDF](#)

Overview | Achievement | Progress | **Gap Closing** | Graduation Rate | K-3 Literacy | Prepared for Success

Gap Closing



The Gap Closing component shows how well schools are meeting the performance expectations for our most vulnerable populations of students in English language arts, math and graduation.

COMPONENT GRADE

B

GRADE

B

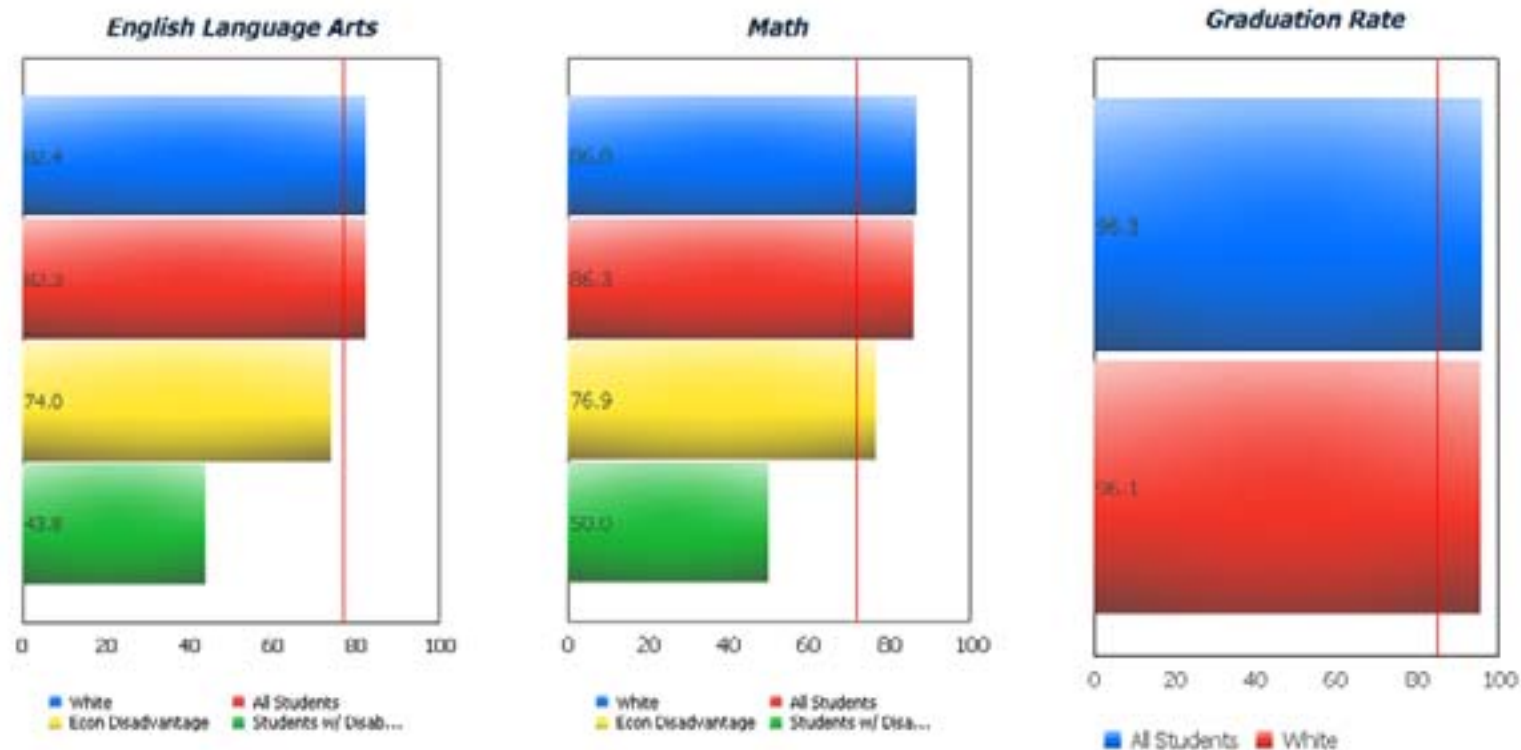
Annual Measurable Objectives

Annual Measurable Objectives (AMOs) compare the performance of student groups to a state goal which is displayed as the red line in the following charts. These charts show how well each group achieves that goal in ELA, math and graduation -- and emphasize any achievement gaps that exist between groups. The ultimate goal is for all groups to achieve at high levels.



81.5%

AMO Points
 A = 90.0 - 100.0%
 B = 80.0 - 89.9%
 C = 70.0 - 79.9%
 D = 60.0 - 69.9%
 F = 0.0 - 59.9%



The red line on each graph identifies the Annual Measurable Objective. The 2017 AMO for ELA is 77.1%, for Math is 72%, and for Graduation Rate is 85.1%. Subgroups with fewer than 30 students are not rated and do not appear on the graphs.

2016 - 2017 Report Card for Bluffton Exempted Village School District

[View Printable PDF](#)

Overview | Achievement | Progress | **Gap Closing** | Graduation Rate | K-3 Literacy | **Prepared for Success**

Prepared for Success



Whether training in a technical field or preparing for work or college, the Prepared for Success component looks at how well prepared Ohio's students are for all future opportunities.

COMPONENT GRADE

C

GRADE

C



47.7%

A = 90.0% - 100.0%
 B = 70.0% - 89.9%
 C = 45.0% - 69.9%
 D = 25.0% - 44.9%
 F = 0.0% - 24.9%

Number of students that earned a remediation free score on all parts of the ACT or SAT, earned an honors diploma, and/or earned an industry-recognized credential

The number of "bonus" students that count an additional 0.3 bonus points each, because they did the above and also earned a 3 or higher on at least one AP exam; earned a 4 or higher on at least one IB exam; and/or earned at least three college credits before leaving high school

Number of	Point Value	Points Earned
68	1	68.0
37	0.3	11.1
Total Points:		79.1
Graduation Cohort:		166
Percentage:		47.7%

Graduates Ready College Ready

How Prepared were Your 2015 and 2016 Graduating Classes?

